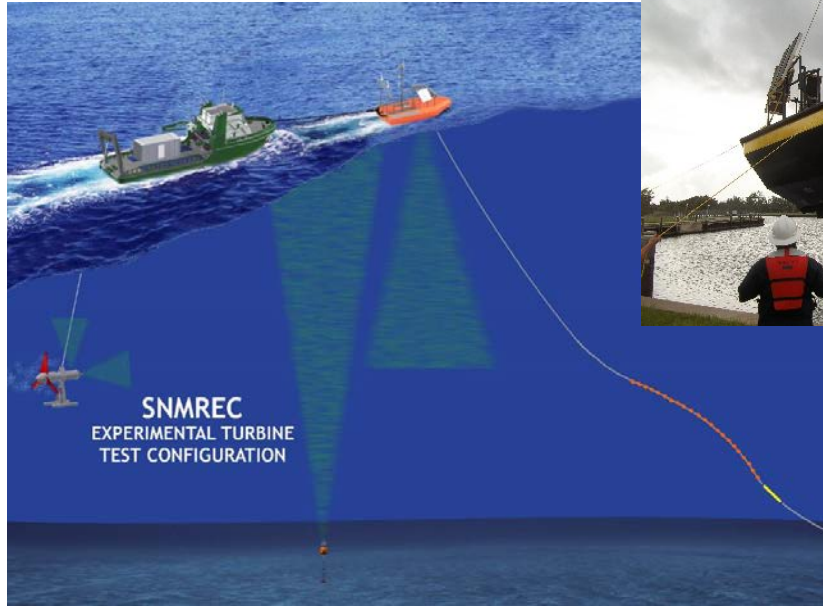


A US MHK Regulatory Story

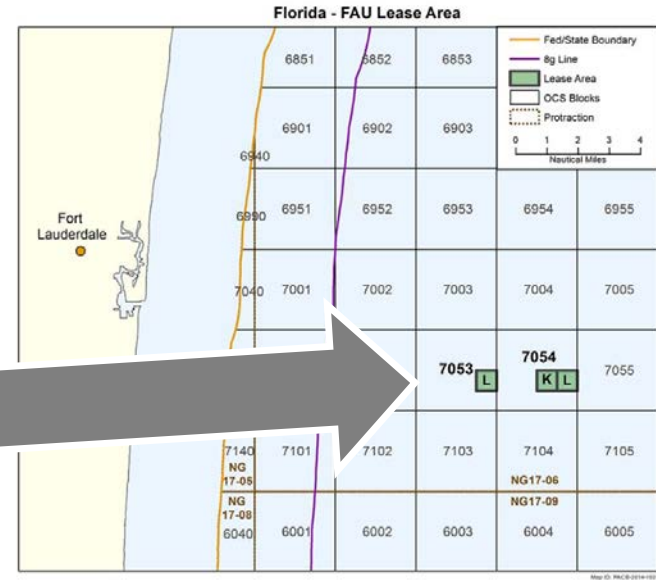
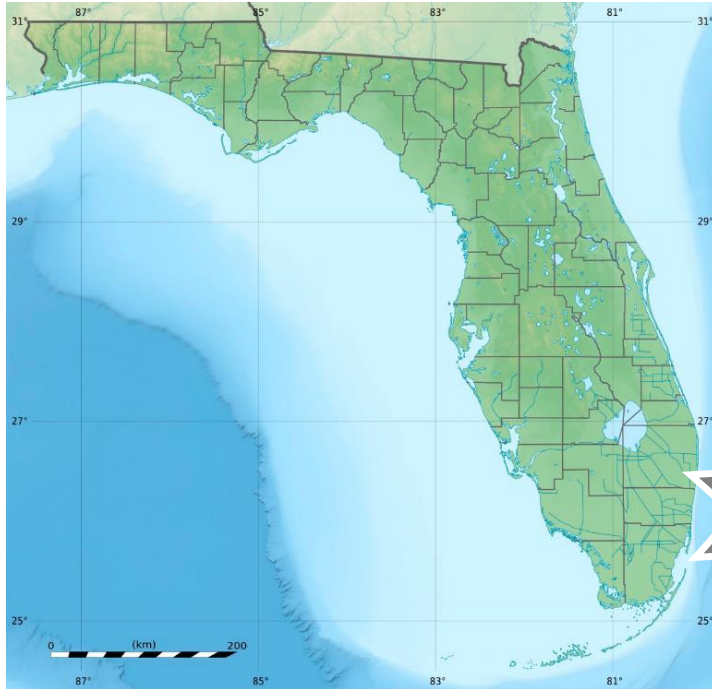
Gabriel Alsenas
Director, SNMREC

Non-grid Connected Test Site Vision

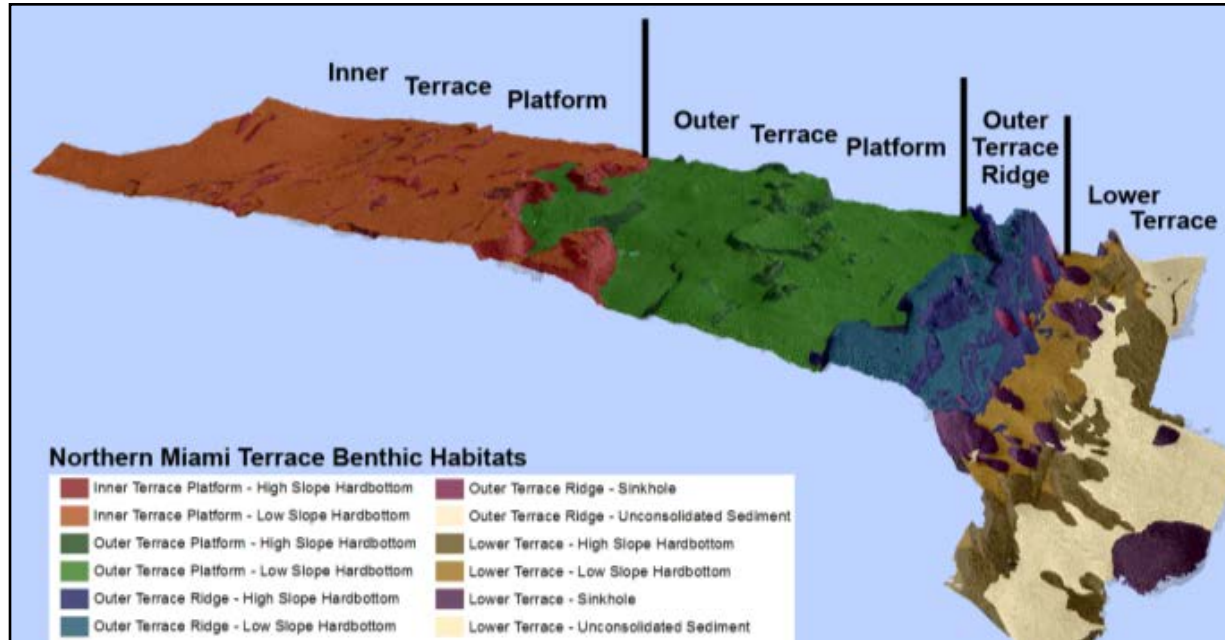
- Fully Permitted for up to **100kW power and 7 meter rotor**
- Resource characterization and **real-time measurement**
- **Health monitoring system**
- Ship-board turbine management up to **25kW power**
- **20kW 3 meter rotor turbine test bed**
- **Persistent research and measurement platform** in the Gulf Stream for **long term studies**



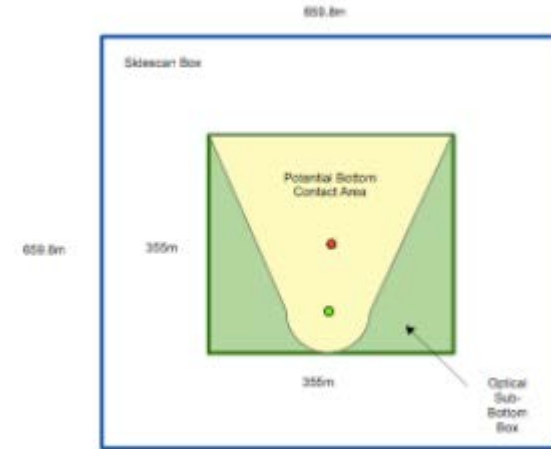
Non-grid Connected Lease Location



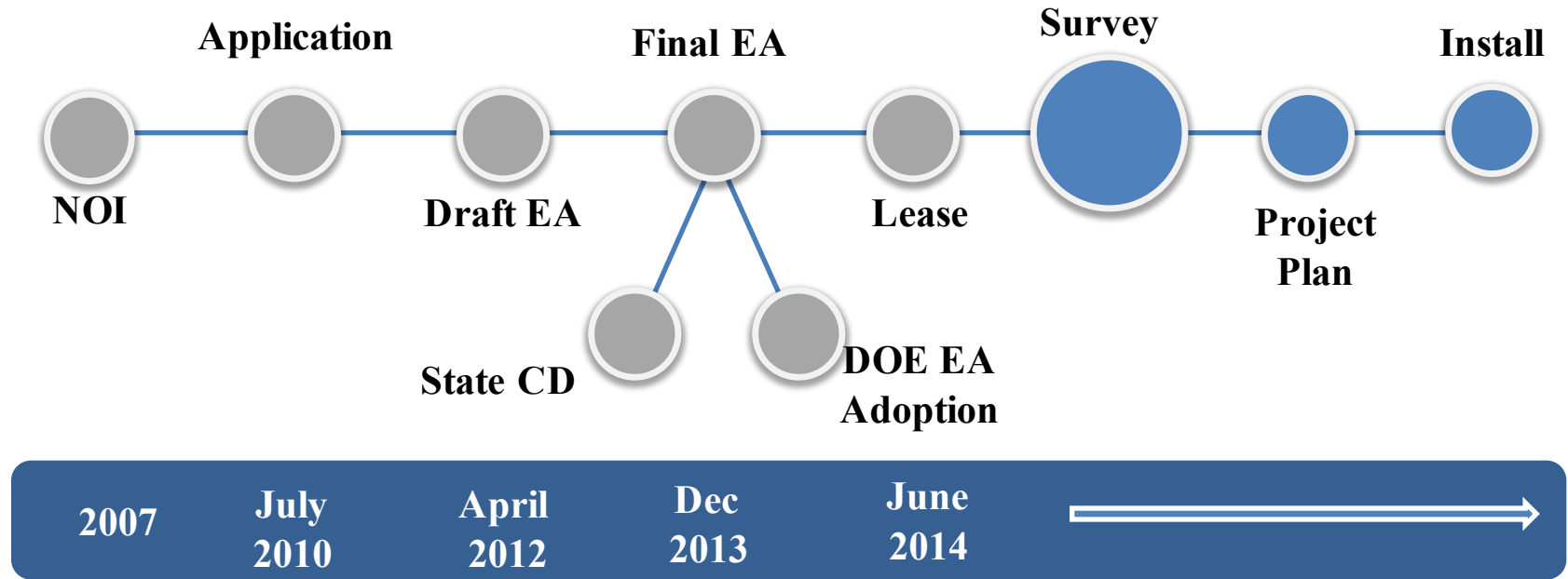
Lease Site Multibeam Data Set



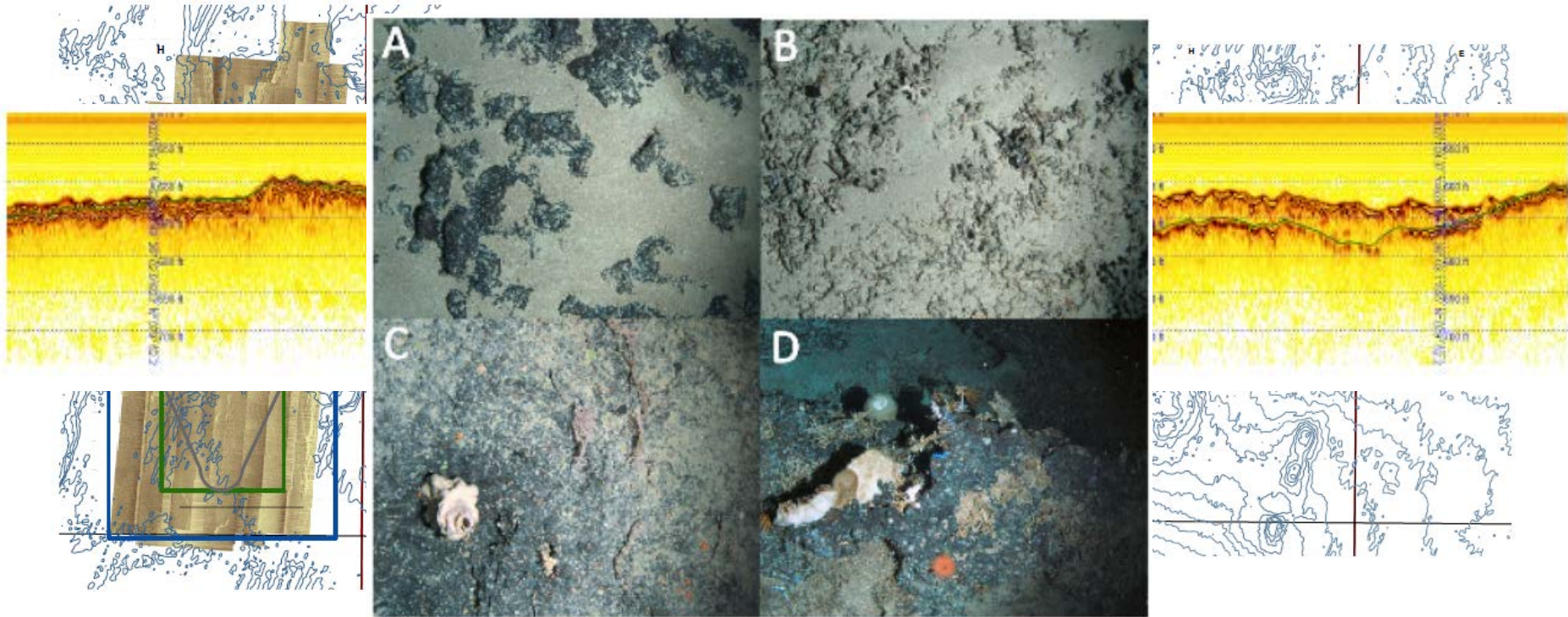
Lease Site Detailed Selection



Lease Timeline



Why Was the Lease Relinquished?



Key Takeaways

- Be wary of new measurement requests
- Maximize existing data and studies
- Think outside the sector for data sets
- Survey early
- Understand laws that govern agency actions
- Remember, applicants are in control